



# Kinship House 2011 Report

Support for new beginnings and healthy families; since 1996

Dear Friends, Sustaining Kin, and Kinship Circle Members,

What a busy fifteenth year of service! This year has been a time to reflect on our past and prepare for our future. Since our start in 1996, we have always taken a long term approach to support the complex needs of foster and adopted children, creating lasting supportive families and networks.

We have served more children this year than any other time in our history, with referrals increasing more than two fold from 2010. In 2011 Kinship House will have touched the lives of almost 325 children.

Our mission of helping children move from instability to new beginnings and healthy families is more poignant than ever, exhibited by striking need and decreasing resources in our community.

Many of our services are perhaps not as glamorous, sensational or visible as some non-profit agencies, but our work is imperative in facilitating change for children who through no fault of their own face significant barriers.

As one of our supporters you understand the depth and impact of our work and the barriers faced by our children. We honor your investment in our roots and ask you to grow with us in 2012 to be part of Growing our Family Tree to meet the needs of each child who comes to our door.

Our children often experience multiple moves which disrupts development, education, attachment, and participation of in events that

are “normal” milestones of childhood. National data has found foster children often experience anywhere from 3-10 moves in a two year period. Multiple moves increase feelings of loss, and make it more difficult to connect to caring adults (Casey Family, 2008) (NDAACAN, 2007).

As adults, foster alumni have more struggles than non-foster peers with higher rates of mental health problems, involvement with the criminal justice system and experiences of violence. In fact, Federal Administration for Children and Families studies, show all spheres of functioning have higher levels of risk and lower performance for adults who were past foster and adoptive children.

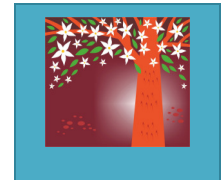
## How can you help with Growing our Family Tree?

Your membership and participation in Kinship circle, Sustaining Kin, volunteerism, and our fund development events will allow our clinicians to keep our record of success growing in 2012. Help us create permanent stable supportive homes, a clear and achievable way to reduce these tragic statistics.

The numbers are important but, the hope we see in each child that we are fortunate enough to reach is the driving force of the work we share with you.

*My warmest regards, have a wonderful holiday season!*

*Heather Jefferis MA*  
Executive Director



PS: Like us on Facebook and take a peek at both FB and our website, [www.kinshiphouse.org](http://www.kinshiphouse.org) to learn more!



# Kinship House 2011 Report

*Support for new beginnings and healthy families; since 1996*

**A new family story** Theo and Sharon came to Kinship House after multiple placements in foster care. Their plan on arrival to Kinship included permanent foster care for Theo age nine, and a possible separate adoption for Sharon who was the younger sibling. After over a year of advocacy, therapy and hands on hard work inside and outside the therapy room, Theo and Sharon found a family together. Moving children to permanent placement changes a cycle that suffocates hope. A healthy new beginning creates a doorway to a successful productive life. Your support is part of this change; without you we would not be here for Theo and Sharon and the other 323 children and families we supported in our community this year.



**Kelly a story of another kind of new beginning** Helping Kelly a hardworking mom who is changing her world to create a stable healthy life for herself and her children, an awe inspiring example of humility. Kelly has battled with addiction, she loves her kids but lost her way. After much struggle and a new found hope in recovery she has rebuilt trust and her life. Kinship House is working hard with mom and her children to ensure their return will be a success and a new beginning, helping them build a community of support and hope.



Kinship House honors the unique needs of each individual who enters our door, we advocate for the best interest of each child, grow with us in 2012!

## **BE OUR KIN: Donate, Participate, Volunteer**

**Donation Options:** Kinship Circle - covers one child's assessment and early treatment program: \$1000 annual donation by individual or group.

Sustaining Kin - Flexible monthly support of your choosing

**Participate:** Join us, learn about us, meet good people, eat good food and have fun - all in the name of foster and adoptive families and kids.

Ways to get involved: Attend an activity, Sponsor an event, contribute your time, Share a talent, and Make an in-kind donation.

**Volunteer:** Donate your time and talents to make a difference in someone's life. We have need for General office help, Facilities support, Event staffing, Board Membership, Board Support.



# Kinship House 2011 Report

*Support for new beginnings and healthy families; since 1996*

---

## Kinship Circle 1,000 + annually

Ted Gilbert  
John, Joan, & Tom Shipley  
Lindsey McGrath  
Roy & Patricia Guptill  
Karen Pierson  
Kathleen Hoffman  
Carol Munson  
Paul Wathen  
Michael & Lorri Kehoe  
Kevin Johnson & Karen Jenkins-Johnson  
Katie Haraguchi  
Richard Glassman  
Kristin Angell

## Volunteer Groups

Alameda Kids Care Club  
Key Bank  
Lake Oswego High School  
Lake Oswego Moms  
St. Mary's High School  
Westminister Anchors

## Kinship House Corporate Sponsors

Sleep Country  
Learning Palace  
Garvey Schubert Barer Law  
Hopworks Urban Brewery  
Stoel Rives LLP  
Al's Garden Center  
Garden Fever  
Collage  
Saint Cupcake

## Board Members

Betsy Welch, Co-Chair  
Richard Glassman, Co-Chair  
Paul Wathen, Treasurer

Steve Larson, Secretary  
Kris Angell, Program Committee Head  
Michele Wasson, Development Committee Head  
DeAngelo Wells, Personnel Committee Head  
Dina Gruenfeld, Media Committee Head  
Karen Pierson  
Bill Blair  
Kacky Hoffman  
Katie Haraguchi

## Foundation Supporters

Adopt US Kids  
Ann & Bill Swindells Charitable Trust  
The Autzen Foundation  
Bank of America  
The Collins Foundation  
Edward Cauduro Advised Charitable Fund  
Equity Foundation  
Hanna Andersson  
Herbert A. Templeton Foundation  
Historic Irvington Community Association  
Hoover Family Foundation  
The Jackson Foundation  
Juan Young Trust  
Meyer Memorial Trust  
Nation Council for Jewish Women  
Oregon Community Foundation  
Portland & E. Portland Rotary  
Portland General Electric  
Providence Community Health Partners  
The Standard  
US Bank/US Bancorp Foundation  
Windermere Foundation